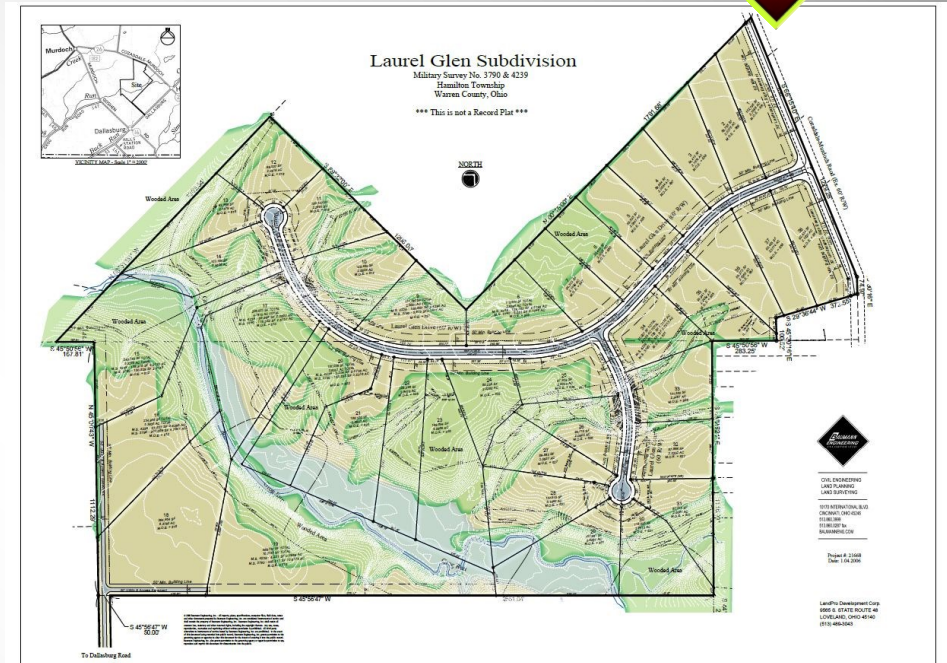


BAUMANN LAND SURVEY, INC.

2008 CENTRAL AVENUE
CINCINNATI, OHIO 45214
513.860.3999
BAUMANNLSI.COM



OHIO WEST VIRGINIA KENTUCKY TENNESSEE INDIANA ILLINOIS IOWA SOUTH DAKOTA



Project: Laurel Glen Subdivision

Location: Warren County, Ohio

Client: LandPro Development Corp.

Baumann Land Survey, Inc. performed a boundary survey for the creation of a 123 acre, 38 lot subdivision. Tract Split Plats were created as part of the project as well. Coordination with an aerial mapping and photogrammetry service provider was arranged. Aerial control targets were set and measured and after the aerial mapping data was delivered, ground-truthing and quality control checks of this third-party data was carried out. A more detailed topographic survey of critical areas, including roadway corridors, was performed to supplement the aerial mapping data. Construction surveying services including roadway and utility layout, and utility as-built surveys were provided.

